

◆ Product pictures



◆ Main Parameter

| Specification | |
|--|--|
| Product NO.: | RS2011-A (Multifunction Portable LED Camping lamp) |
| Work Voltage | 10-30VDC |
| LED chip | 10 Pcs high bright SMD5050 6000K LED, 6Pcs Φ5MM 6000K LED 9 Pcs SMD5050 Red LED 8Pcs SMD5050 amber LED |
| Battery pack | 4 pcs AA alkaline battery |
| Lumen | ≧ 300 LM |
| Illumination Function (Three block dimmer) | 30% Auxiliary lamp light, 70% Main lamp light, 100% light |
| Warning | Single flash, flash, SOS |
| USB power output | DC5V/1500mAH, can charge for the mobile phone |
| The run time if use the battery | Work time for the 100% light are on: ≥4h, Work time for the red light flash: ≥10h |
| Accessories | 1PC X DC12V Cigarette lighter with 3 meters wire, 1PC X Carry bag. 4PCS magnet on the base and can be absorbed on the metal materials. |
| Work temperature | From -10°C d to 60°C |
| IP rating | IP44 waterproof |
| Product weight | Net: 0.42Kg; Gross: 0.55Kg |
| Light size | 187*142*60mm |

◆ Application



It is suit for car, ship, RV , camping, outdoor travel etc

◆ Product description

1. Use the variable widely 10-30VDC work voltage .
2. Can use the 10-30VDC work voltage driver and also can use the 4 pcs AA alkaline battery driver.



3. Use the Epi-star high brightness SMD5050 led chip.
4. Use the very compact structure design and then it is very portable.
5. Many function for outdoor cam
6. Use the IC control the current.
7. Three block dimmer, 30% Auxiliary lamp light, 70% Main lamp light, 100% light

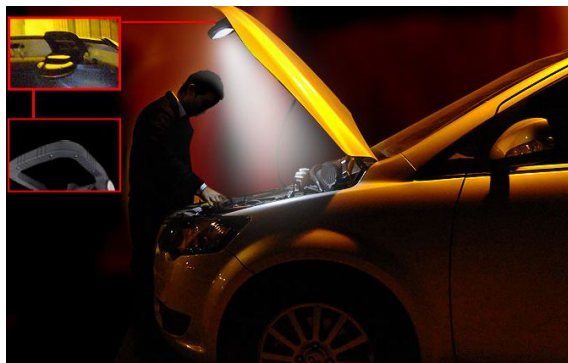


◆ Application

1. Can provide the illumination for the outdoor camping.



2. Can use the magnet fixed on the car when the car need to check or repair on the wild.



3. Can provide warning or SOS function when we are dangerous on the wild.



4. Can charger for the mobile phone.



◆ Package

Inner box: 215X195X70 MM

Outbox size: 445X405X235mm, 12pcs / ctns , 8.5kg/ctns

Accessories

1PC X DC12V Cigarette lighter with 3 meters wire,



1PC X Carry bag.

